



New Guard Coatings Group

A global reputation to protect.

The information herewith is given with the best of New Guard Coatings Group knowledge.

Rights are reserved to change and update the data without notice.

This information is not exhaustive and it is the user's responsibility to ensure that this data sheet is the most current by contacting their local New Guard Coatings Group branch prior to using the coating/product.

www.newguardcoatings.com

NORTH • SOUTH EAST • MIDLANDS • NORTH WEST • HULL • SCOTLAND

PRODUCT DATA SHEET

Geo-Fix®

ALL WEATHER

Paving Jointing Compound



Ready to use self setting permanent joint filler for use in both dry and wet conditions

FEATURES & BENEFITS

- ✔ Can be used in both dry **and wet** conditions- no more wasted days due to wet weather
- ✔ Can be used on joint widths of a minimum of 5 mm wide and a minimum of 15 mm deep
- ✔ **GEO-FIX®** is unaffected by wind, rain washout and mechanical sweeping equipment
- ✔ No mixing required
- ✔ Brush applied - no special skills or equipment needed
- ✔ Non staining - attractive and neat finish
- ✔ Up to 20 times faster to complete than traditional methods
- ✔ Durable joints which are unaffected by frost, salt UVA and chemicals
- ✔ Resists weed and plant growth between joints
- ✔ Water and air permeable - allows for continued nourishment of tree and plant roots
- ✔ Enables ornate paving patterns and designs to be jointed quickly and effective
- ✔ Comparable strength to 4:1 mortar when set

USES

GEO-FIX® is a quick and easy way of applying a rigid joint over 5mm wide on all types of paving having joint widths of 5mm and over

- ✔ Indian Stone
- ✔ Concrete
- ✔ Slate
- ✔ Clay
- ✔ Terracotta
- ✔ Granite
- ✔ Porcelain

PRODUCT INFORMATION

PACKAGING - GEO-FIX® All Weather is supplied in hermetically sealed 14kg packs.

APPEARANCE / COLOUR - Stone / Mid Grey / Slate Grey / Anthracite / Graphite

JOINT WIDTH - minimum 5 mm

JOINT DEPTH - minimum 15mm

MINIMUM JOINT DEPTH - with light vehicular traffic - 40 mm**

WORKING TEMPERATURE - 3°C to 30°C

WORKABILITY DURATION - *approx 45 minutes

*at 20°C and 50% relative air humidity working time reduces to 30 minutes

YIELD - approx 15m² joint width 6 mm x 15 mm joint depth - 450 mm x 450 mm paving units

SHELF LIFE - GEO-FIX® All Weather has a minimum shelf life of 24 months when stored in unopened packs in accordance with the manufacturers instructions.

STORAGE - Store in a cool dry place out of direct sunlight. Protect the pack from punctures or piercing. Any exposure to air will start the curing process.

On areas subject to occasional light vehicular traffic.

**See details on application procedure for use in such areas

WATCH POINTS

Use GEO-FIX® All Weather within 45 minutes of opening.

* In temperatures exceeding 20°C the material MUST be used within 30 minutes of opening the bag.

Do not use in temperatures below 3°C or if the ground temperature is below 3°C
When applying GEO-FIX® All Weather the paving elements must be kept damp.

APPLICATION PROCEDURE

A Trial area should be carried out in order to ensure that the material, colour and finish meet requirements.

PREPARATION OF SUBSTRATE

Ensure that the paving to be jointed free from loose dirt, debris, oil, grease, etc. It is essential that joint widths are a minimum of 5mm wide with a minimum depth of 15mm. Deeper joints can be part filled and compacted with dry sand or other dry materials, to the required minimum depth.

**In areas, which are subject to occasional light vehicular traffic it is essential that the paving elements are secured on a Class 1 mortar and that, a high percentage of the mortar is squeezed up the joint thereby providing support for the paving elements.

GEO-FIX® All Weather has superior flexural strength compared to mortar, however, joint failure can still occur in this type of situation.

GEO-FIX® All Weather should be considered for its aesthetic and not its structural properties therefore all paving must be firmly fixed using an appropriate bedding technique to prevent settlement and movement which will have an adverse effect on the jointing material. Where a "wet" fixing technique has been used to bed the paving the mortar must be allowed to dry before application of **GEO-FIX® All Weather**.

APPLICATION

Wet the paving surface. The paving must be kept wet during application but free from standing pools of water. Failure to wet the paving surface will result in temporary staining. Ensure that the areas where you are not working remain wet at all times. This is particularly important in warm or hot weather.

Carefully open the vacuum-packed bag and sprinkle **GEO-FIX® All Weather** sufficient to cover an area of 2-3 m²

Using a soft brush, push the **GEO-FIX® All Weather** into the joints ensuring that they are filled with the compound.

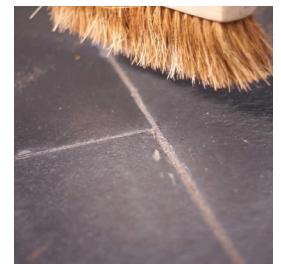
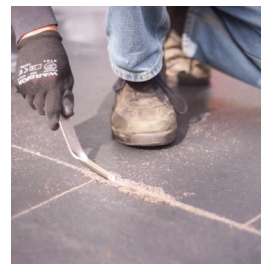
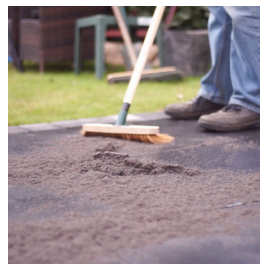
The material **MUST** be compacted into the joints.

Compact **GEO-FIX® All Weather** into the joints with a pointing tool or by use of a vibrating plate. Top up and compact ensuring a fully compacted and topped up joint before carefully sweeping off any excess with a soft brush ensuring that the material is swept at a 45° angle to the joints.

Finish the surface decoratively giving a smooth flat finish with a pointing tool before moving onto the next area to be jointed

Any residue left on the surface when cured can be simply cleaned off by sweeping with a stiff brush.

Material or residue that has been left exposed for more than 30 minutes should NOT be used, as it will be adversely affected.



LIMITATIONS

- ✘ Do **not** use on joints narrower than 5mm
- ✘ Do **not** use on joints **less than** 15mm deep
- ✘ Do **not** use on chamfered/tapered joints

Due to natural shade variances in sand occasional colour differences may occur between batches. Where use of multiple buckets are required always use the same batch of material to ensure consistency of colour.

The jointing should not be cleaned by use of high pressure washers until cured for a minimum of 14 days. The distance between nozzles to jointing must be at least 15 cm using a fan nozzle.

HEALTH & SAFETY

***For full information on Health and Safety matters regarding this product the relevant Health and Safety Data Sheet should be consulted.**

May cause sensitization by skin contact. Keep out of the reach of children. Wear suitable gloves. If swallowed seek medical advice and immediately show this product information, packaging or label.

ECOLOGY, HEALTH & SAFETY

For advice and information on the safe handling, storage and disposal of the product, users should refer to the most recent Safety Data Sheet (SDS) containing physical, ecological, toxicological and other safety related data.

The following general comments apply to all products.

SOLVENT BASED PRODUCTS

Use in well-ventilated areas avoiding inhaling. Suitable respiratory Equipment may be needed, e.g.. when spraying. Can cause skin, eye irritation. Wear protective eye shields and gloves during use. Do not smoke or allow sparks or naked lights when stored or in use.

POWDER PRODUCTS

Should be handled to minimize dust formation; use light mask if excessive dust is unavoidable

RESIN PRODUCTS

Can cause irritation, dermatitis or allergic reaction. Use protective equipment particularly for skin and eyes. Use only in well ventilated areas.

SPILLAGE

Chemical products can cause damage; clean spillage immediately.

LEGAL NOTES

The information given here is given in good faith, based on our best knowledge and experience of the products not only on laboratory work but also on field experience when properly stored, handled and applied under normal conditions in accordance with Geofix's recommendations. However, due to numerous factors affecting results the user of the product must test the product's suitability for the intended application and purpose. We offer this information without any guarantee and no patent liability is assumed.

For additional information or questions, please contact our technical department.