



Specialist Construction Supplies for Repair, Maintenance, Building & Infrastructure

Fibrefill Data Sheet

Specification notes

Product: **Fibrefill**

Supplier:

Arcon Construction Supplies
19-20 Prestwood Court
Leacroft Road
Warrington
WA3 6SB

Tel: **01925 852225**

Email: mail@arconsupplies.co.uk

Web: www.arconsupplies.co.uk

Call **01925 852225** or visit [Arcon Construction Supplies](http://www.arconconstruction.com)
... for more information on our flooring and construction products

[Industrial Flooring](#) | [Concrete Repairs](#) | [Protective and Waterproof Coatings](#)
[Jointing and Paving Mortars](#) | [Anti-slip Floor Paints](#) | [Concrete Repair Mortars](#)

Impregnated fibreboard filler

Uses

Fosroc Fibreboard is a compressible, non-extruding, bitumen impregnated, fibreboard expansion joint filler suitable for forming joints between in-situ and pre-cast concrete components.

Forming structural expansion and separation joints in:

- Concrete pavements and floors
- Roads, ramps and runways
- Pedestrian areas
- Concrete retaining walls
- Concrete basement structures and subways

Advantages

- Easy to handle, cut and tamp
- Resilient
- Will not extrude under compression

Standards compliance

DTP Specification for Highway Works, Dec 1991 series 1000 Clause 1015 (pavement joints).

PSA standard specification clauses for airfield pavement works.

American Association of State Highway Officials, Standard Specification M 153-54.

US Federal Specification HH-F-341 a: Type 1, Class B.

Description

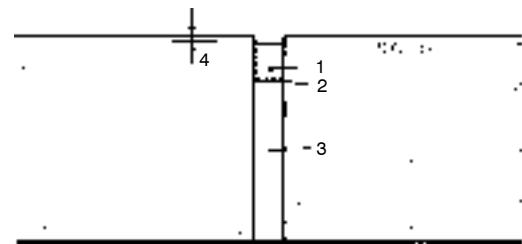
Fosroc Fibreboard is a compressible joint filler manufactured from bitumen impregnated wood fibres. It is supplied in sheet form and is used to form and fill expansion joints in in-situ and pre-cast concrete construction.

Technical support

Fosroc offers a comprehensive range of high performance, high quality technical products. In addition, Fosroc offers a technical support package to specifiers and contractors which includes computer-aided design (CAD), standard details as well as on-site technical advice from staff with unrivalled experience in the industry.

Design criteria

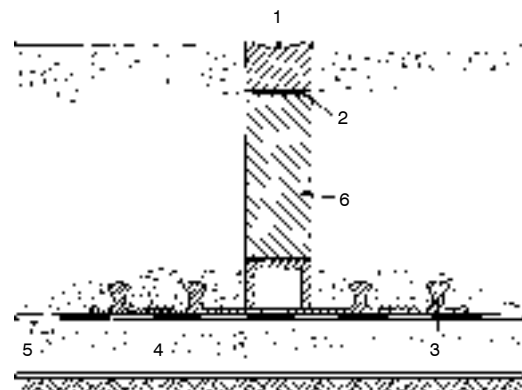
Typical sealed expansion joints in roads, runways and other trafficked surfaces



- | | |
|----------------------------------|---------------------|
| 1 *Pliastic or *Colpor 200PF | 3 Fosroc Fibreboard |
| 2 Polyethylene bond breaker tape | 4 Recessed seal |

* Also available from Fosroc.

Example of a sealed subway expansion joint is shown below



- | | |
|------------------------|---------------------|
| 1 *Thioflex 600 | 4 Blinding concrete |
| 2 Bond breaking tape | 5 *Famflex membrane |
| 3 *Supercast Rearguard | 6 Fosroc Fibreboard |
- 'S' waterstop

* Also available from Fosroc.

Properties

Form:	Compressible sheet
Solids content:	100%
Recovery:	Greater than 70%
Weathering test:	No disintegration

Specification clauses

The expansion joint filler as detailed shall be genuine Fosroc Fibreboard supplied by Fosroc and installed strictly in accordance with the relevant Fosroc data sheet.



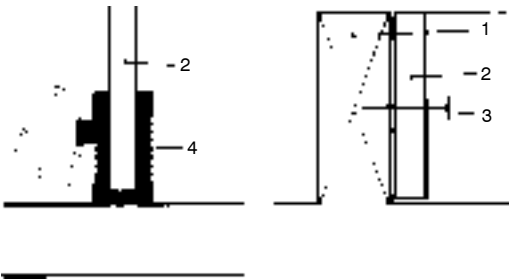
Application instructions

Slabs

Where used to form an expansion joint in in-situ concrete, Fosroc Fibreboard shall be placed against the shuttering on the concreting side before the pour begins. Copper nails may be used to prevent displacement in joints in suspended slabs.

Alternatively, Fosroc Fibreboard may be bonded to the existing slab or previous pour using a suitable adhesive such as Plastiseal or Supastik Wall Panel Adhesive. Care should be taken not to contaminate surfaces of the sealing slot with the adhesive.

Where a sealed joint is not required e.g. soffit joints or in retaining walls, Fosroc Fibreboard may be installed in conjunction with PVC Capping Strip.



- | | |
|---------------------|---------------------|
| 1 Shuttering | 3 Copper nails |
| 2 Fosroc Fibreboard | 4 PVC Capping Strip |

Joint sealing

A joint sealing slot can be formed by placing a removable timber former on top of the Fosroc Fibreboard. Alternatively, Fosroc Fibreboard can be installed to the full depth of the slab and cut back to the required depth subsequently using a power brush machine. This latter method is generally used for housing estate roads which cannot be cleaned and

sealed until all building has finished. Fosroc Fibreboard should be tamped down to ensure that it fills the joint completely and provides continuous support for the joint sealant.

Estimating

Nominal sheet			
thicknesses:	12.5 mm	20 mm	25 mm
Sheet sizes:	1220 x 2440 mm		
Sheet weights:	12.5 mm	20 mm	25 mm
	12.4 kg	19.8 kg	24.75 kg

Storage

As with all organic materials there is a very slight risk of spontaneous combustion if stored long term in wet conditions. Store under cover, in the dry.

Precautions

There are no known health hazards associated with Fosroc Fibreboard in normal use.

Additional information

As well as joint sealants and ancillary products, Fosroc also manufactures a wide range of complementary products which includes waterstops, waterproofing membranes, grouting, anchoring and specialised flooring materials. In addition, a wide range of products specifically designed for the repair and refurbishment of damaged reinforced concrete is available. This includes hand-placed and spray grade repair mortars, fluid micro-concretes, chemical-resistant epoxy mortars and a comprehensive package of protective coatings.



Fosroc Limited

Coleshill Road
Tamworth
Staffordshire B78 3TL
Tel 01827 262222
Fax 01827 262444
www.FosrocUK.com

Fosroc Fibreboard is the registered trade mark of Fosroc

Important note

Fosroc products are guaranteed against defective materials and manufacture and are sold subject to its standard Conditions for the Supply of Goods and Services, copies of which may be obtained on request. Whilst Fosroc endeavours to ensure that any advice, recommendation, specification or information it may give is accurate and correct, it cannot, because it has no direct or continuous control over where or how its products are applied, accept any liability either directly or indirectly arising from the use of its products, whether or not in accordance with any advice, specification, recommendation or information given by it.