

# Resupatch

Epoxy resin repair mortar



RESIN SURFACES LIMITED

## Product Data Sheet

Data Sheet Ref:PAST 05/05 Page 1 of 2

### DESCRIPTION

RESUPATCH is an easy to use Epoxide Resin Mortar, with exceptional adhesive properties. This makes it ideal for rapid repair of concrete surfaces in heavy duty environments

RESUPATCH is non-dusting and highly resistant to damage by abrasion, chemicals, water or oil.

### ADVANTAGES

1. Minimum surface preparation
2. Easy to use.
3. Cures rapidly.
4. Bonds to concrete, steel, wood or stone.
5. Concrete-like in appearance
6. Dust-free and permanent
7. Impact Resistant

### WHERE TO USE

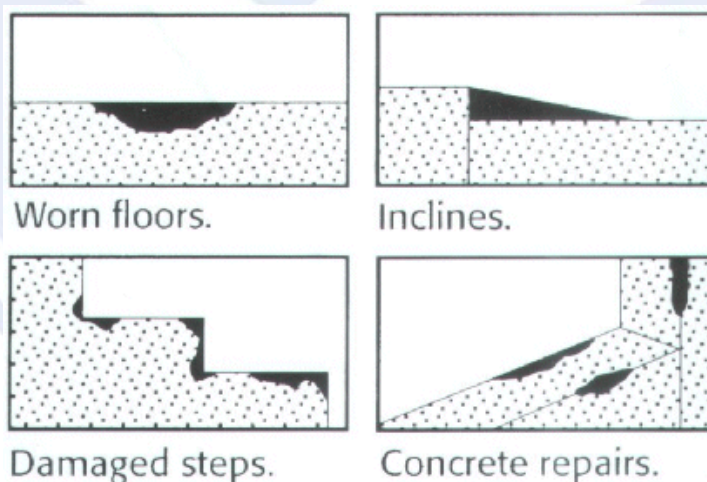
RESUPATCH is designed for general application as a concrete repair compound, especially for filling in wide cracks and holes in concrete floors, broken steps, walls and other concrete surfaces.

### GRADES AVAILABLE

RESUPATCH STD. heavy duty repairs to floor and walls. Back filling of floor channels, guttering and drains, bedding of machinery etc.

RESUPATCH L.W. is designed as a light-weight concrete repair kit for damaged vertical surfaces. May also be used for building up badly damaged wooden surfaces such as doors and windows.

Resupatch is ideal for:



# Product Data Sheet

Data Sheet Ref:PAST 05/05 page2 of 2

## **PHYSICAL PROPERTIES AT 20°C**

### **RESUPATCH**

supplied in 5 kg. units equivalent to approx. 2750 c.c.

### **RESUPATCH L.W.**

supplied in 6 kg. units equivalent to approx. 4600 c.c.

### **Pot life at 20°C**

approx. 40 mins.

### **Application temperature limits**

+ 5-30°C

### **Shelf life**

2 years at ambient temperature.

### **Tack free time at 20°C**

approx. 6 hours

## **PREPARATION**

Surfaces should be clean and free from loose particles and grease etc. Abrasion of the surface may be required to ensure a good mechanical key for very smooth surfaces.

## **APPLICATION**

Apply with trowel, filling knife or similar tool.

## **MIXING**

**RESUPATCH:** This is a two-pack product. Thoroughly mix all the hardener with the resin aggregate, mix for 4-5 minutes to ensure a smooth consistency. Apply the complete mix to the prepared area - tamp or press the material into position and smooth with a trowel or other tool. Allow to set.

**RESUPATCH L.W.:** This is a three-pack product. Thoroughly mix base and hardener and then slowly add aggregate until the complete product is fully blended together.

## **CLEANING**

Do not allow RESUPATCH to set on tools.. Clean down with R.S. EPOXY SOLVENT.

## **HYGIENE**

RESUPATCH is formulated from materials designed to achieve the highest level of performance as safely as possible. However, specific components require proper handling and suitable equipment, this information is given in the relevant safety data sheets.

In all cases, spillages or skin contamination should be cleared as soon as practically possible, by dry wiping of the affected area, and thorough washing with soap and water.

## **Consult Safety Data Sheet Ref. HSPA**

The information given in this data sheet is derived from tests and experience with the products and is believed to be reliable. The information is offered without guarantee to enable purchasers to determine for themselves the suitability of the product for their particular application. Any specification or advice given by the company is based on the information supplied by the purchaser. Resin Surfaces Limited cannot be held accountable for errors or omissions as a result of that information being incorrect or incomplete. No undertakings can be given against infringement of patents.